

Our Vendors:

Neolithic Stone ~ Carries a wide range of sculptural quality stones & tools from around the world. If you desire a particular stone, contact Neolithic Stone in advance, www.neolithicstone.com or 604-736-5201

Marenakos ~ For your granite, basalt, sandstone, and limestone needs. Also supplying Trow & Holden tools. www.marenakos.com or 425-392-3313

Bronze Stone ~ Black granite bases in a variety of sizes and shapes. To preorder contact Mark Joachime. www.bronzestone.com or 916-285-5593

Art City Stone Supply (Represented by Marenakos) ~ Travertine, onyx, alabaster, soapstone, pipestone, limestone, sandstone, marble, basalt, and more. www.artcitystudios.com or 805-648-1690

Arless Newcomb ~ will have all sizes of pins and sleeves available plus Star Bond Glue. Arless will be available to assist with pinning projects on the field. arlessculpt@yahoo.com or 360-301-1085

Carolyn Anderson's "Magic Fingers" ~ Restore alignment and health to stressed muscles. 360-698-2198

Workshop Schedule (subject to change)

Workshop	Instructor	Days	Time
"Small Scale Jade Carving"	Deborah Wilson	Tues-Sat	10 am/2 pm
"Figurative Sculpture"	Claire McArdle	Sat-Wed	10 am/2 pm
"Sculpting in Granite"	Norbert Jaeger	Sat-Sat	10 am/2 pm
"Beginning Carving"	Ruth Mueseler	Sun-Tues	9 am/1 pm
	Tamara Buchanan	Wed-Fri	9 am/1 pm
"Design Basics"	Meredith Earls	Sun-Tues	2 pm
"Pinning and Sleeving"	Arless Newcomb	Tues-Sat	1 pm

Evening Schedule

Sun	Guest Artist Slide Show
Mon	Guest Artist Slide Show
Tues	Guest Artist Slide Show
Wed	NWSSA Gen Meeting, Election, BOD meeting to follow
Thu	Scholarship Auction FUN for a CAUSE!
Fri	Party Time - Bring dance music
Sat	BBQ weather permitting

Special Thanks:

4Culture ~ for your 2012 Award, allowing the NWSSA to purchase tools and equipment for our beginning stone carvers. www.4culture.org

Birch Equipment ~ Generator, Air Compressor and field equipment rentals www.birchequipment.com

Concut Diamond Products ~ Tom Monaghan www.concutusa.com

Master Wholesale ~ www.masterwholesale.com

Nelson Petroleum ~ Arlington www.nelsonpetroleum.com

Al Mangold ~ Live Auctioneer



Early Bird registration: Sign up before June 15th & Save \$100 off Full-Time Lodge & Camp Attendance!

We commit to lodge space on July 15th - registrations after July 15th will be subject to availability!
(register early to save \$100 and assure your spot)

**to register: mail in the enclosed form or register online
www.nwssa.org**

NWSSA
P.O. Box 27364
Seattle, WA 98165



26th Annual International Stone Carving Symposium
July 13th - 21st, 2013

at Cascadian Center ~ Camp Brotherhood Mount Vernon, Washington



NWSSA: Is a nonprofit (501c3) membership organization serving as a resource for stone sculpture. It develops educational opportunities, and provides a support system for all who love stone. You need not be a sculptor to come to a symposium. At the symposium you can learn all you need to know to work stone. Who knows where the journey will take you.



northwest
stone sculptors
association
www.nwssa.org



Northwest Stone Sculptors Association

www.nwssa.org



26th Annual International Stone Carving Symposium July 13th - 21st

Cascadian Center Camp Brotherhood Mount Vernon, WA

We invite you to join us at the Cascadian Center at Camp Brotherhood for eight days of playing with stone, communing with nature and fun with old friends and new. All meals are provided and no household chores – now that is freedom! Each year this pastoral venue (complete with emus, alpacas and a donkey) is transformed into a field of tents with smiling people covered in stone dust. And if the day turns unbearably hot, the swimming pool is right there waiting.

Instructors are available for everyone from beginner to expert, and sharing ideas and advice is something we always do.

There are slide shows, informational talks, and wonderful campfires in the evenings. Our Auction to raise funds for education is a night of hilarious fun, second only to our last night party. Another highlight is our Sculpture Walk on Saturday, July 20th, open to the public.

Bring yourself, your creative energy, your humor, your tools and a favorite piece of stone. If you don't have stone or tools you can buy them from our helpful vendors.

If you have not yet had the pleasure of a time spent at Camp B it could be time to treat yourself. Scholarships and work-study plans are available on a first come first served basis.

Tuition Includes: instruction, workshops, mentoring, meals and accommodations. Upon pre-registration you will receive a package of information, including directions to Camp Brotherhood and a list of things to bring. Check in begins on Saturday, July 13th and lunch will be the first meal served.

Accommodations: You choose; the amenities are varied. The Camp has lodges, which provide motel style rooms accommodating 2-3 individuals with a bathroom in each room. If you prefer, private cottages may be available at an additional cost, but only if our reserved lodges are full. If you'd like to commune more closely with nature, space is provided for pitching a tent.

Scholarship Auction: Thursday, July 18th. A very, very fun and entertaining event for a very, very good cause. The auction supports our education goals by funding work-study and scholarship positions for new and emerging artists. Bring something to donate, we'll buy anything and have a great time doing it.

Field Mentors: Most of our members have years of experience and work with various types of stone. If you desire individualized guidance or support, field mentors: **Tracy Powell, Tom Small, Tony Angell, Will Robinson, Meredith Earls and Gerda Lattay** will be available. Both parties gain from the experience.

Sculpture Show on the Meadow: We also have our now-famous Sculpture Walk on the last Saturday. It is a great opportunity to show your work in a supportive and appreciative environment. We encourage everyone (experienced and beginners) to bring your finished piece of work to display. Invite your friends and clients to come. Some pedestals are provided, but bring your own if you can. A 30% sales commission supports NWSSA.

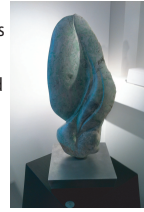
Financial Aid: Available for work-study and scholarships. For information contact: **Barbara Davidson, Symposium Director** 250-760-0363 bdauidson@chrysalidarts.ca

by Mail:

NWSSA
PO Box 27364
Seattle, WA 98165-1864

Workshops and Instructors:

Deborah Wilson - We are pleased to welcome back acclaimed contemporary jade and granite sculptor Deborah Wilson. Her work reflects her love for organic forms and her ongoing interest in utilizing the characteristics that define this "stone of heaven." She has recently been participating in an international effort to revive the art of carving jade, and continues to hold workshops from her home-based studio in Vernon British Columbia. Deborah will be sharing techniques for small scale jade carving. Tooling and equipment ideas (ie: how to make your own point carver) will be discussed and demonstrated and a good selection of pre-cut Canadian & US jades will be for sale. While the focus will be primarily small-scale carving, Deborah will have an unfinished larger freeform sculpture in jade on site for interactive participation.



Norbert Jaeger - For 25 years, Norbert has worked primarily with marble and granite. Some time ago he attended sculptor education schooling in Frankfurt, Germany and received the National Prize for sculpture. His subjects are nature, people and space. Norbert's engagement with the material is important, so that ultimately a communication takes place. Jaeger supports the stone's character and works his sculptures with figurative symbolic, contrasted with geometric forms. Norbert's works do not give answers, but rather ask questions about our existence.



Claire McArdle - An internationally recognized sculptor, Claire moved to Italy in 1988, after earning a Bachelor in Fine Arts, to work with the master carvers in Carrara and continues to travel to Italian quarries to rough out her travertine and marble work. Her works are in private and public collections throughout the United States, Europe, Mexico and Japan. McArdle's commissions for public, educational, and religious institutions include monumental works for Spring Hill College, Mobile, AL, Marian House, Baltimore, MD, The Holton-Arms School, Bethesda, MD, St. Bede, Williamsburg, VA, Holy Trinity Church, Washington, DC, Holy Redeemer College, Washington, DC as well as many private commissions.



Ruth Mueseler - Self taught, her art runs the gamut from the tiny to monumental, from humor to eulogy. As an instructor, Ruth is thoughtful in her manner and respectful of those wanting to learn stone. She will teach you about the stone and the tools and how to use them. She comes highly recommended by her former students.

Tamara Buchanan - Tamara has been sculpting stone for 25 years. Featured in many shows throughout the West, her work has won several awards. She loves sharing the process of carving stone and has been teaching at her studio on Lopez Island for 10 years.

Meredith Earls - Design Basics – Principles of design are what are applied to design elements to bring those together in a piece. Design is as critical to the success of a sculpture as knowledge of tools and materials. Using examples and hands-on projects, Meredith will demonstrate many of these design basics, make them relatable, and explore how our minds play a part in translating them.

Arliiss Newcomb - Pinning and Sleeving - Arliiss will share her ideas on selecting a base and methods for drilling and pinning sculpture to base. She will have a selection of pins & sleeves and Star Bond Glue available for purchase.

Registration for Camp Brotherhood 2013 Symposium Dates July 13-21st, 2013

Now you can register and pay online at NWSSA.org

Members, Register by June 15th
Early Bird Discount to Save \$100!

Late registrations are limited to space available.

	Member	Non-Member
Annual NWSSA Membership	\$ 70	
Full Time, Lodge	\$975/ \$875*	\$1,075
Full Time, Tent/Camper	\$825/ \$725*	\$ 925
Day Rate*, Lodge	\$185	\$ 210
Day Rate*, Tent/Camper	\$160	\$ 185
Total Submitted:	\$	\$

I will attend these dates: _____

*Be sure to include total from #of days x \$day rate.

*Day rates include any portion of 24 hour stay.

Name: _____
Address: _____
City: _____ State/Prov. _____
Zip/PC: _____ Phone: _____
email: _____

Check here if anything has changed

Preferred Roommate(s): _____

Special Diet: _____

T-shirt Size: S M L XL XXL XXXL

Make your checks payable to **NWSSA** or Pay by Visa or MasterCard.

Card # _____ Exp Date: ___/___

Signature _____

Required for credit card payment

A registration packet with additional information and directions will be mailed/emailed with your confirmation.



"The best artist has that thought alone which is contained within the marble shell; The sculptor's hand can only break the spell to free the figures slumbering in the stone!"

- Michelangelo

For fast, easy registration, register online (preferred) at our website:

www.nwssa.org

or mail Registration Form to:

Barbara Davidson, Symposium Director

PO Box 27364 Seattle, WA 98165-1864 ~ Do it TODAY!